

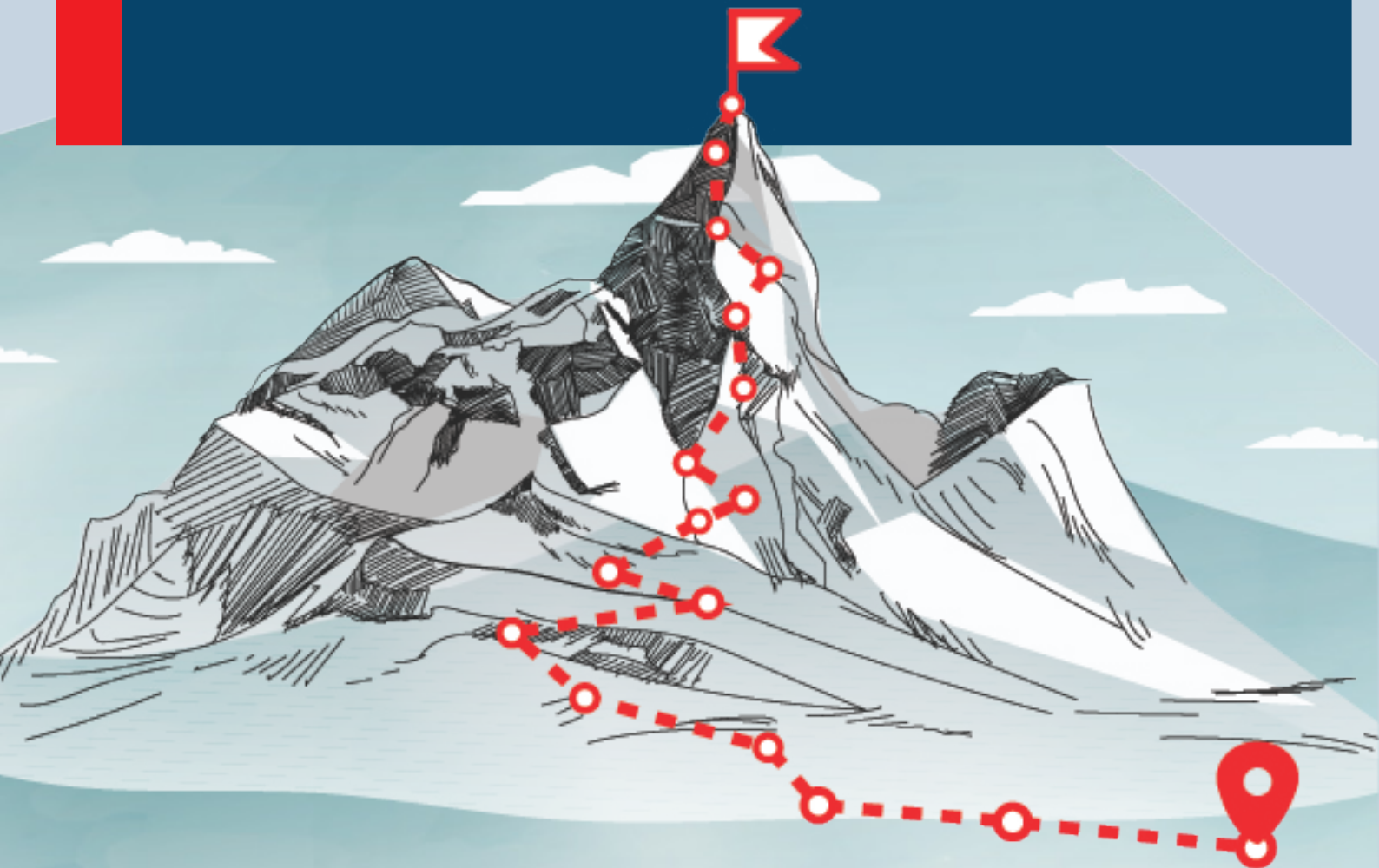
## MS AGARWAL GROUP JOURNEY



*We Salute to our Hero, Founder Great visionary*  
**Late Shri Maneklal Agarwal Ji**

Our Honorable Founder,  
**Seth Shri Maneklal Agarwal Ji**  
of MS AGARWAL Group,  
(15 November 1936 – 9 October 2019),  
was a business magnate hailing from  
Jhunjhunu Dist. Baragaon, Rajasthan.

He was the eldest son of  
**Seth Shri Gulab Rai Ji and Gomti Devi Ji**  
and an alumnus of renowned  
educational institutions, Badruka  
College and Nizam College in  
Hyderabad. He completed his  
graduation in the year 1957.



## MS AGARWAL GROUP JOURNEY

### Seeds of Diversification

Seth Shri Gulab Rai Ji, a name to reckon with in the textile industry, envisioned his mission in the year 1939. He was the one who introduced the knitting concept from Japan and was very focused on trading and manufacturing.

A persona passionately involved in the streams of business and technology, he ventured into diversified segments, including steel industry (Rolling Mill) at Azamabad, Hyderabad, in 1961, which was given up in the year 1967 due to segregation of business within the family. With a strong business family background, our founder, Seth Shri Maneklal Agarwal Ji, initiated ventures into the hire and purchase of vehicles, steel and textile, and powerloom textile in 1985.

### Story of Expansion

Seth Shri Maneklal Ji's agile manifesto towards technological advancement led to the launch of Air Weaving Technology in the year 1985. This massive plant was established at Nacharam, Hyderabad.

Later on, we established:

**Agarwal Foundries in 1990**

**Rama Spinners in 1993**

**MS Agarwal Foundries in 2005**

**Sitaram Spinners Pvt. Ltd. in 2008**

**Maruthi Ispat Pvt. Ltd. in 2009**



MS AGARWAL FOUNDRIES PVT. LTD.



### Attaining Excellence

These emerging developments were instrumental in materializing the vision into a mission, exploring different horizons like steel, spinning, and textile industries. With his commitment towards passion, we are the market leaders in the South for the steel segment. Inspired by his father, Seth Shri Gulab Rai Ji, he opted for extensive diversity in the area of business, balancing work and family life, following the footsteps of his parents.

### Giving Back to the Community :

"Charity begins at home" was a mantra Seth Shri Maneklal Ji strongly believed in. He organized charity events and supported people below the poverty line. This family is known for charity and generously contributes to the development of society.

Additionally, the family has a culture of helping the poor by serving breakfast to the needy, every morning at their residence and extending unconditional support to employees in dire necessity.

Some values cascaded by Seth Shri Maneklal Ji to his children were **"Try till you succeed. Act well on your part, there lies the honor."**

### Some of the charity initiatives are :

Smt Gomati Devi PG College

Smt Gomati Devi BEd College

Smt Gomati Devi Yoga College

Seth Shiv Dutt Rai High School

Seth Shiv Dutt Rai Senior Secondary School  
(Hindi Medium)

## MS AGARWAL GROUP JOURNEY

### His Views on Some Important Points :

**Achievement:** Every single day is an achievement as my journey was so exciting and tough and I enjoyed.

**Technology:** We have started adopting it and there is a lot to explore. We are going to adopt technology in every step which we are going to take here on.

**Health Secret:** Having ample work and dedication towards the same with passion keeps you Fit.

**Employer and Employee:** Are TWO peddles to progress without which neither an organization nor and individual can Progress.

**Hurdle:** LOYALTY is an issue we are struggling with, when it comes to relationship – every individual has to work on it – one should never give up on Morals – Its important.

**Pride:** Is FALSE and complete destruction – Individual will not be able to assess his own Fall.

### Message to the fraternity :

There is a lot of scope for growth in all aspects, and individuals have to strive rigorously towards meeting their goals and objectives.

Life and time will not attempt to mature with the phases we adapt; it is the role of an "individual" to align themselves with life and time.

A good reputation and image in society are to be sought over riches. Strive to hold MS Agarwal Group at the pinnacle now and forever.

**Cherish every day;  
we have adapted the  
journey as our  
destination.**